

CENTRALVAC INTERNATIONAL POWER UNITS (120 VOLT)



CVS-16DP

Watts	Amps	IWL ¹	CFM ²	Air Watts ³
2866	25.2	135"	184	846
RPM ⁴	Motor	Filtration	Canister Cap.	Ship. Wt.
17,600	Double 3-Stage	Paper/Cloth	7 Gallons	44 lbs



CVS-11DP

Watts	Amps	IWL ¹	CFM ²	Air Watts ³
2740	23.6	113"	208	814
RPM ⁴	Motor	Filtration	Canister Cap.	Ship. Wt.
17,000	Double 2-Stage	Paper/Cloth	7 Gallons	43 lbs



CVS-07DP

Watts	Amps	IWL ¹	CFM ²	Air Watts ³
1798	15.8	84"	188	546
RPM ⁴	Motor	Filtration	Canister Cap.	Ship. Wt.
17,700	Double 2-Stage	Paper/Cloth	7 Gallons	34 lbs



CVS-16

Watts	Amps	IWL ¹	CFM ²	Air Watts ³
1433	12.6	135"	92	423
RPM ⁴	Motor	Filtration	Canister Cap.	Ship. Wt.
17,600	Single 3-Stage	Paper/Cloth	7 Gallons	29 lbs



CVS-11

Watts	Amps	IWL ¹	CFM ²	Air Watts ³
1370	11.8	113"	104	407
RPM ⁴	Motor	Filtration	Canister Cap.	Ship. Wt.
17,000	Single 2-Stage	Paper/Cloth	7 Gallons	28 lbs



CVS-07

Watts	Amps	IWL ¹	CFM ²	Air Watts ³
899	7.9	84"	94	273
RPM ⁴	Motor	Filtration	Canister Cap.	Ship. Wt.
17,700	Single 2-Stage	Paper/Cloth	7 Gallons	24 lbs

¹ IWL - Inches of water lift represents how far up a glass tube a vacuum motor will pull a column of H₂O in a sealed system.

² CFM - Cubic feet per minute measures the quantity of air moved by a vacuum motor at a 2" orifice.

³ Air Watts - Measures maximum working vacuum power at a 3/4" diameter maximum orifice.

⁴ RPM measurement stated is while unit is operating with a 2" orifice.

All Power Units are pewter in color.

CENTRALVAC INTERNATIONAL POWER UNITS (120 VOLT)

THE “HORSEPOWER RACE”

People who specify CENTRALVAC have often looked at built-in vacuum systems made by other firms. They're often confused by the many ways these firms have found to try to make their product appear to be the one with the most power.

CENTRALVAC's difference is a better overall design; not just the motor, but how it's made part of a complete and fully integrated engineered system.

And that's the CENTRALVAC advantage—superior design, gained from years of experience and proven by thousands of installations in all types of homes, not just throughout the United States, but in Canada, Japan, Australia, New Zealand and Europe.



DETERMINE THE SIZE OF THE POWER UNIT

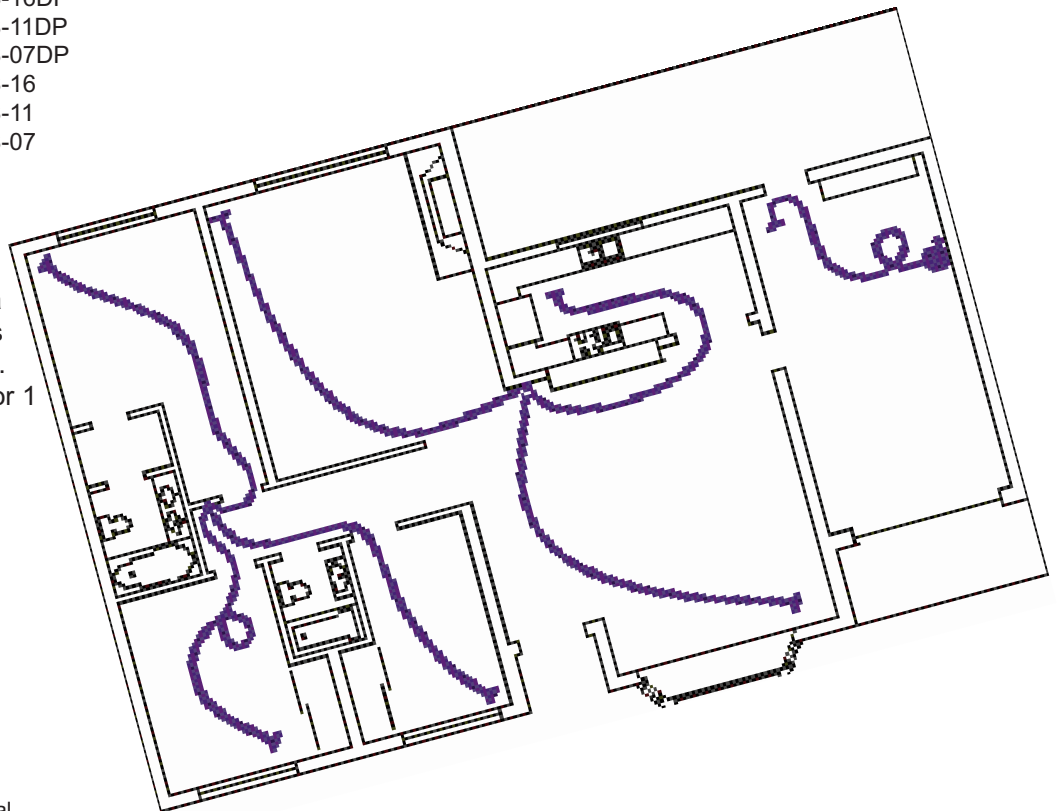
There is not a simple formula for choosing the correct size power unit for your cleaning system. If you live in a high altitude area (5,000 to 7,000+ ft. above sea level), you may need to move to the next larger size power unit, or go with a double motor unit. 220 volt power units are also available.

Remember, for your cleaning convenience, you can never have too much power, or too many inlets!

Area to be Cleaned (sq ft).....	Recommended Power Unit
7,000 and up	CVS-16DP
up to 7,000.....	CVS-11DP
up to 6,000.....	CVS-07DP
up to 5,000.....	CVS-16
up to 4,000.....	CVS-11
2,000 or less	CVS-07

DETERMINE THE NUMBER OF INLETS

Again, there is no simple formula to determine the number of inlets needed for your cleaning system. A good rule of thumb is to plan for 1 inlet for every 500 -700 sq ft of cleaning area.



Product specifications subject to change without notice.

Copyright © 2015 CentralVac International. All Rights Reserved.



PO Box 259
23455 Hellman Ave.
Dollar Bay, MI 49922

T (800) 666-3133
F (906) 483-4058

www.centralvac.com
sales@centralvac.com